



**CEDRUS**  
PURE LOGISTICS



People.Partnership.Performance.



- ✧ Company was established in 2005 year
- ✧ Over 500 trucks with various trailers
- ✧ Groupage (LTL) and Full loads (FTL)
- ✧ Oversized freight
- ✧ Warehouse services
- ✧ Customs brokerage services in Lithuania





- ☀ Efficient and flexible work structure, individual approach to each Client
- ☀ Experienced and responsible staff
- ☀ Working with us is transparent and understandable, according to your convenient structure, without pitfalls and hidden costs.
- ☀ Protection of commercial and informational interests of the Client
- ☀ Positive reputation, stability, extensive work experience
- ☀ A full range of additional services: forwarding, shipping, warehousing, customs clearance
- ☀ The opportunity to cooperate throughout the year at a FIX rate
- ☀ One contact person for all directions for each Client
- ☀ Efficiency and communication with the manager 24/7



**AUTOMOTIVE**



**HI-TECH &  
ELECTRONICS**



**FMCG & PERISHABLES**



**PHARMACEUTICAL**



**FOOD &  
BEVERAGES**



**EXCISED GOODS**



**DANGEROUS GOODS  
(ADR)**

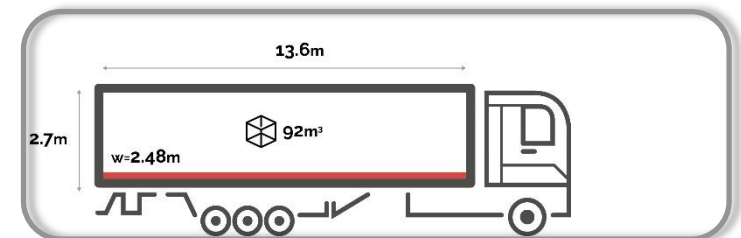
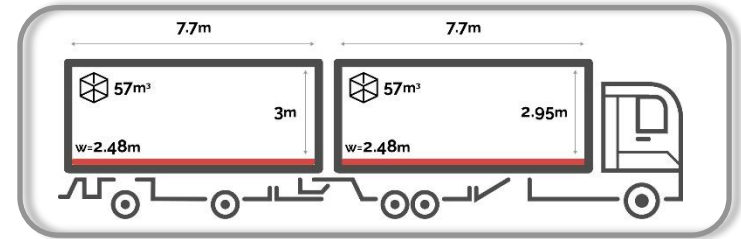
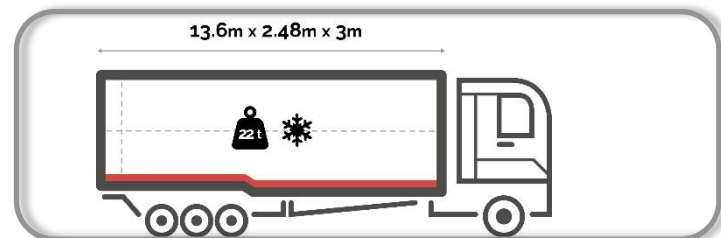
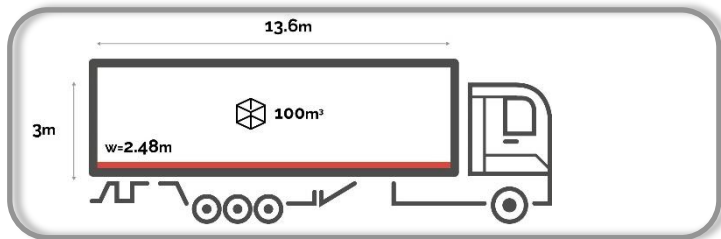


**OVERSIZE CARGO**





- ✳ Transportation of dangerous goods (ADR) and cargo with temperature control
- ✳ Transportation of oversized cargo
- ✳ Additional ALL-RISK insurance
- ✳ Delivery of goods from Europe directly or with the possibility of transshipment in Poland
- ✳ The possibility of express delivery with two drivers in the truck



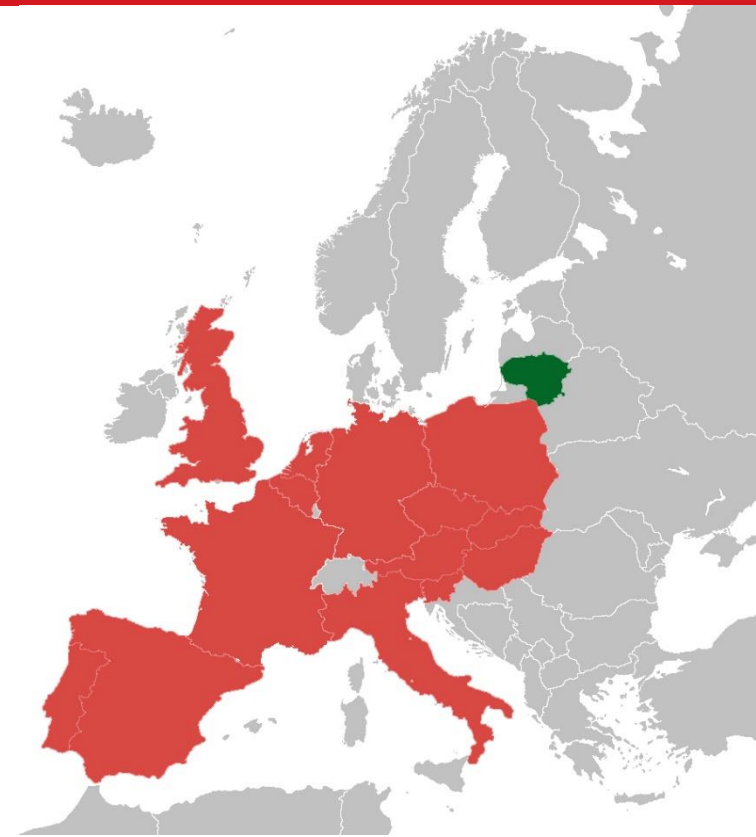


Delivery of goods directly from Europe or with the possibility of transshipment in Poland.

# Regular Routes to the Warehouse in Vilnius

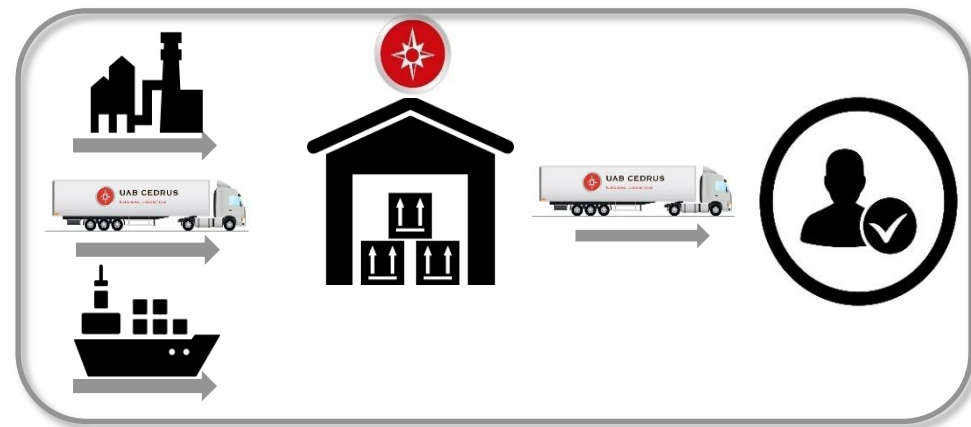


Country	Number of routes per week	Transit time (in working days)	
		LTL	FTL
Spain	2	5-6	5
Portugal	2	8-9	7
France	3	4-5	4
Belgium / Holland	3	4-5	3
Great Britain	2	4-5	4
Germany	3	3-4	2-3
Austria	2	3-4	3
Italy	2	5-7	3-4
Czech Republic	4	3-4	2
Poland	4	2-3	1
Slovakia	2	3-4	3
Slovenia	2	4-5	3-4
Hungary	2	3-4	3
Turkey	2	8-10	7





- ❖ Consolidation of goods throughout Europe
- ❖ Centralized management
- ❖ All information in one hand
- ❖ Just one contact person
- ❖ Saving money and time
- ❖ Supply flexibility








- ☀ Warehouse license for excise products (storage of tobacco, alcohol)
- ☀ Truck weight control system in place
- ☀ All warehouses are equipped with modern security systems.
- ☀ Warehouse hours: 7 days a week
- ☀ Dangerous Goods Storage (ADR)
- ☀ Possibility of side loading / unloading
- ☀ Container loading and unloading ramps
- ☀ Packaging, repacking, labeling and wrapping, additional quality control



## Documents

- ✧ Registration of preliminary import declarations to ensure fast delivery of goods across the customs border
- ✧ Providing customs guarantees for transit cargo
- ✧ Preparation of customs documentation in just one day
- ✧ Registration of CMR, TIR, T1 and customs documents for transit through the EU countries
- ✧ Providing customs guarantees and paperwork for temporary import / export of goods
- ✧ Bonded warehouse services, customs warehousing of transit cargo
- ✧ Change of ownership of goods in a customs warehouse (in the free zone)

- 
- ☼ Internal audits
  - ☼ Regular Quality Meetings
  - ☼ Corrective and Preventive actions
  - ☼ Regular customer surveys
  - ☼ Control of the response time to the request (15 minutes - standard request)
  - ☼ Quality control of telephone communication between manager and a client
  - ☼ Control over the availability and relevance of standard operating procedures
  - ☼ Mandatory and regular audit of all suppliers and regular certification of all employees